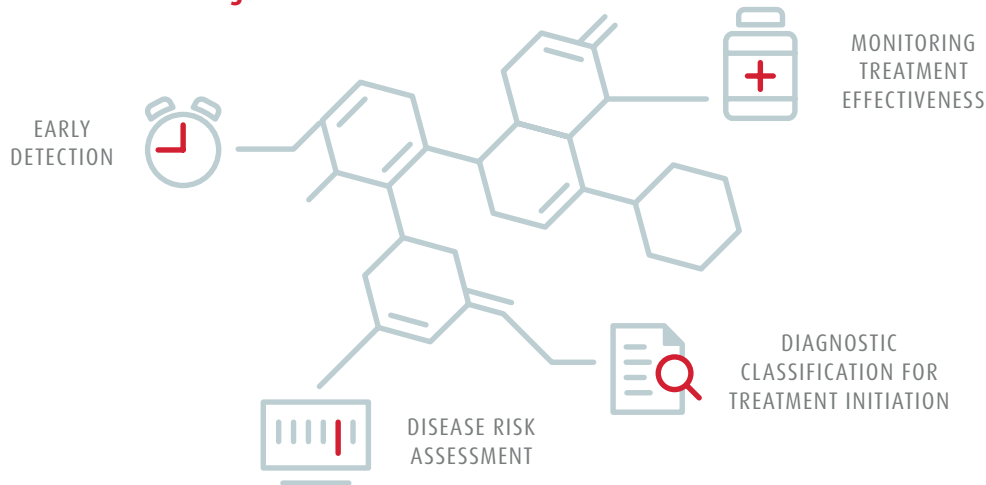


Novel biomarkers for lysosomal storage disorders (LSDs)

Enabling diagnosis, prediction and therapy monitoring

Biomarkers transform the management of LSDs

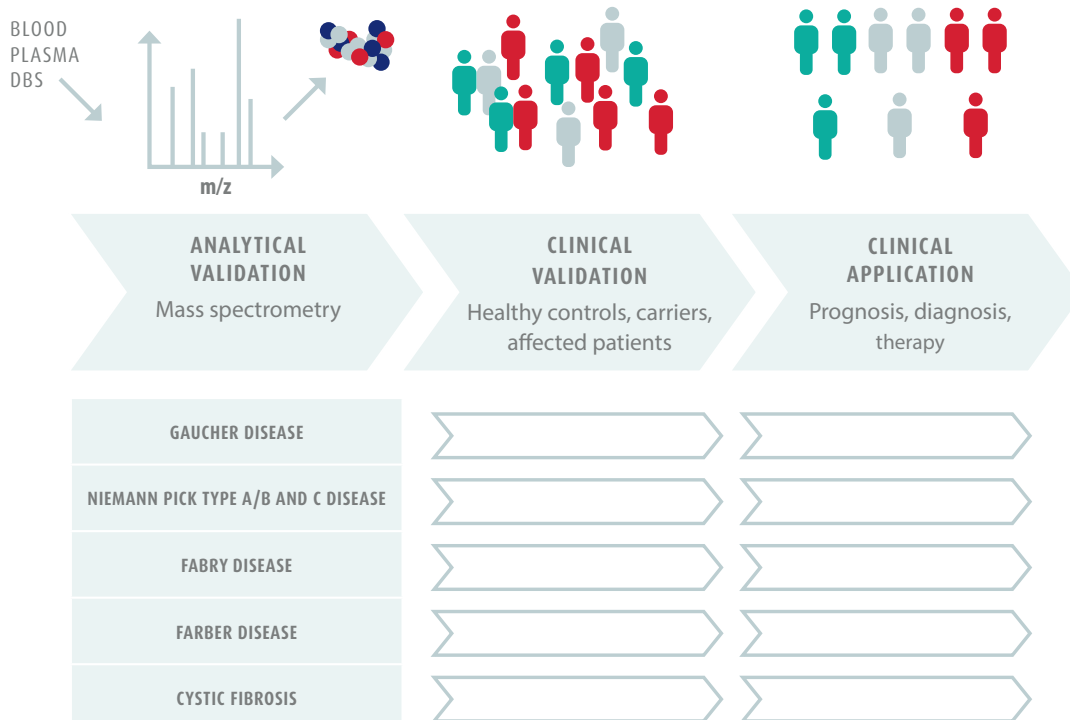


CENTOGENE's biomarkers

- › Easy to be analyzed using DBS (dried blood spots) technology
- › Linked to clinical manifestation
- › Quantify easily and reliably in clinical samples
- › Reflect realistically the burden of the disease
- › Elucidate the molecular pathogenesis of the disease
- › Reflect the therapeutic measure outcomes

Novel mass-spectrometry (MS) based biomarkers for LSDs

- › Proven world-class expertise in the identification of new biomarkers, validated in epidemiological clinical trials
- › Established MS-based proprietary biomarker tests for Gaucher, Niemann-Pick type A/B and C, Fabry, Farber and Cystic Fibrosis
- › Optimized and facilitated sample logistics with our CE labeled filtercards, CentoCard®



Benefits of CENTOGENE's biomarkers

Analytical superiority

- Simplified logistics and analysis in blood, plasma, and DBS (CentoCard®)
- High sensitivity and specificity

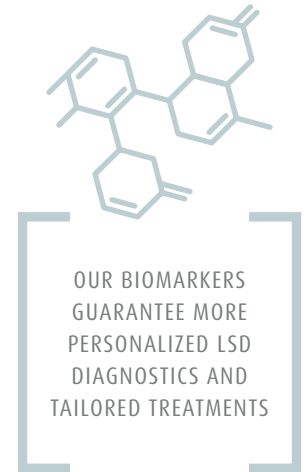
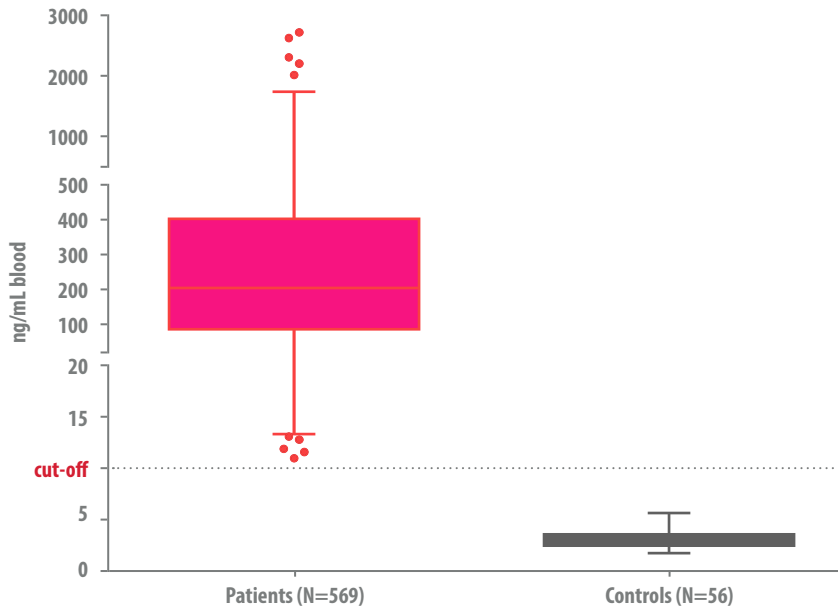
Clinical superiority

- Shortest TAT
- Interpretation by scientific and medical experts

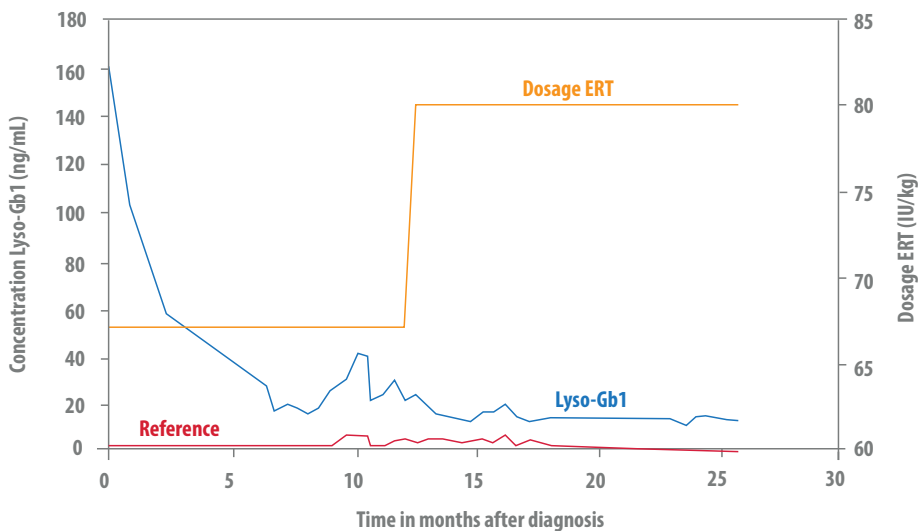
Application of CENTOGENE's biomarkers: diagnosis, therapy monitoring and evaluation

For example, lyso-glucosylsphingosine (Lyso-Gb1) is an excellent biomarker used by our scientists for the accurate screening, diagnosis and follow-up of Gaucher disease

Lyso-Gb1 quantification in Gaucher patients and carriers



Lyso-Gb1 follow-up study for a patient under ERT for more than 2 years



CENTOGENE works alongside academic and industrial partners, as well as patient organizations to develop new diagnostic assays and biomarkers that can improve the condition and prospects of patients affected by lysosomal storage disorders

➤ Contact Details

Customer Service
 Phone: +49 (0)381 203 652-222
 Fax: +49 (0)381 203 652-119
 E-Mail: dmcq@centogene.com

CENTOGENE AG
 Schillingallee 68
 18057 Rostock, Germany
www.centogene.com

CLIA #99D2049715

